



Staining options available for a different appearance!

MONSTER BLOCK RETAINING WALL SYSTEM



Please visit our website at www.monsterblocks.net for more pictures, pricing and installation guide.



Midwest Ready Mix

1405 E. Hwy 50
Vermillion, SD 57069

Plant: 605-638-0812
Fax: 605-624-0075
Email: dave@midwestreadymix.com

Replace manual labor
with machine power!!



Perfect for walkout basements



Small Walls



Large Walls

The Big Block Advantage!

Faster

With our Five Decker Block you can install 40 sq ft. of wall in seconds!!

Stronger

These massive blocks are made of solid concrete and have the strength to hold back most any type of soil.

Easy to Install

No more back breaking work. Use your skid steer or backhoe!!



Cost Effective

Our system requires less excavation & backfill which means more money in your pocket.

Straight or Curved Walls

With our unique block design you can make a curved wall with up to an 18 foot radius or a straight wall with the same block.

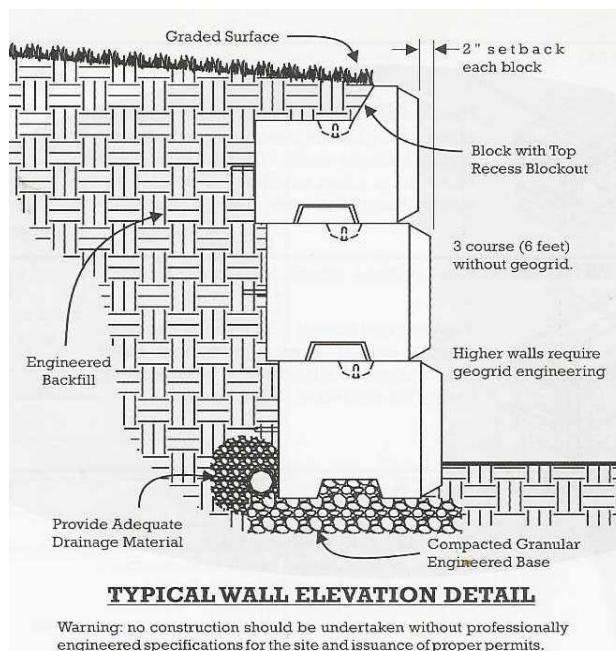
Corner Walls

Allows for a 90 degree corner.

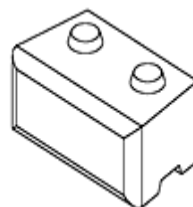
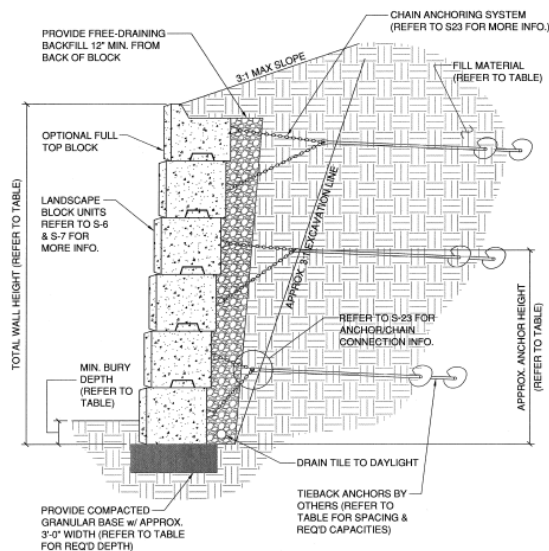
Top Cap Blocks

These blocks allow you to cover most of the top of the block with soil and provides a small concrete boarder.

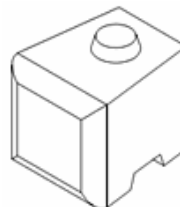
Typical Installation



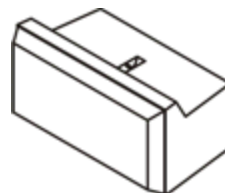
Taller Wall Installation



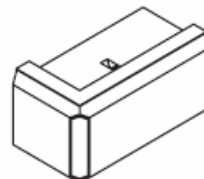
Full Block
 Width = 4 ft Weight = 2200#
 Height = 2ft Sq ft of wall area = 8
 Depth = 2 .3ft Price = \$99



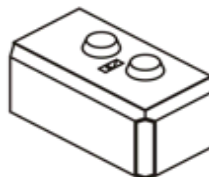
Half Block
 Width = 2 ft Weight = 1200#
 Height = 2ft Sq ft of wall area = 4
 Depth = 2 .3ft Price=\$55



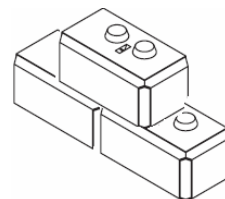
Full Top Cap Block
 Width = 4 ft Weight = 1800#
 Height = 2ft Sq ft of wall area = 8
 Depth = 2 .3ft Price = \$99



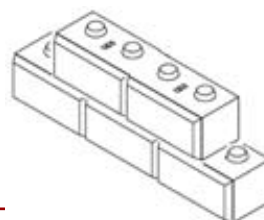
Full Top Corner Block
 Width = 4 ft Weight = 2400#
 Height = 2ft Sq ft of wall area = 12
 Depth = 2 .3ft Price = \$110



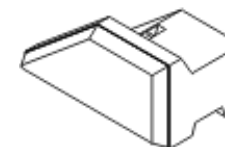
Full Corner Block
 Width = 4 ft Weight = 2600#
 Height = 2ft Sq ft of wall area = 12
 Depth = 2 .3ft Price = \$110



Mighty Monster Block
 Width = 8 ft Weight = 5000#
 Height = 4ft Sq ft of wall area = 24
 Depth = 2 .3ft Price = \$297



Mega Monster Block
 Width = 12 ft Weight = 9000#
 Height = 4ft Sq ft of wall area = 40
 Depth = 2 .3ft Price = \$495



Angle Top Block
 Width = 4 ft Weight = 1400#
 Height = 2ft Sq ft of wall area = 6
 Depth = 2 .3ft Price = \$99



New Line Post Insert!

Midwest Ready Mix

1405 E. Hwy 50
 Vermillion, SD 57069

Plant: 605-638-0812
 Fax: 605-624-0075

Email: dave@midwestreadymix.com



Less Excavation with the anchor tieback system!