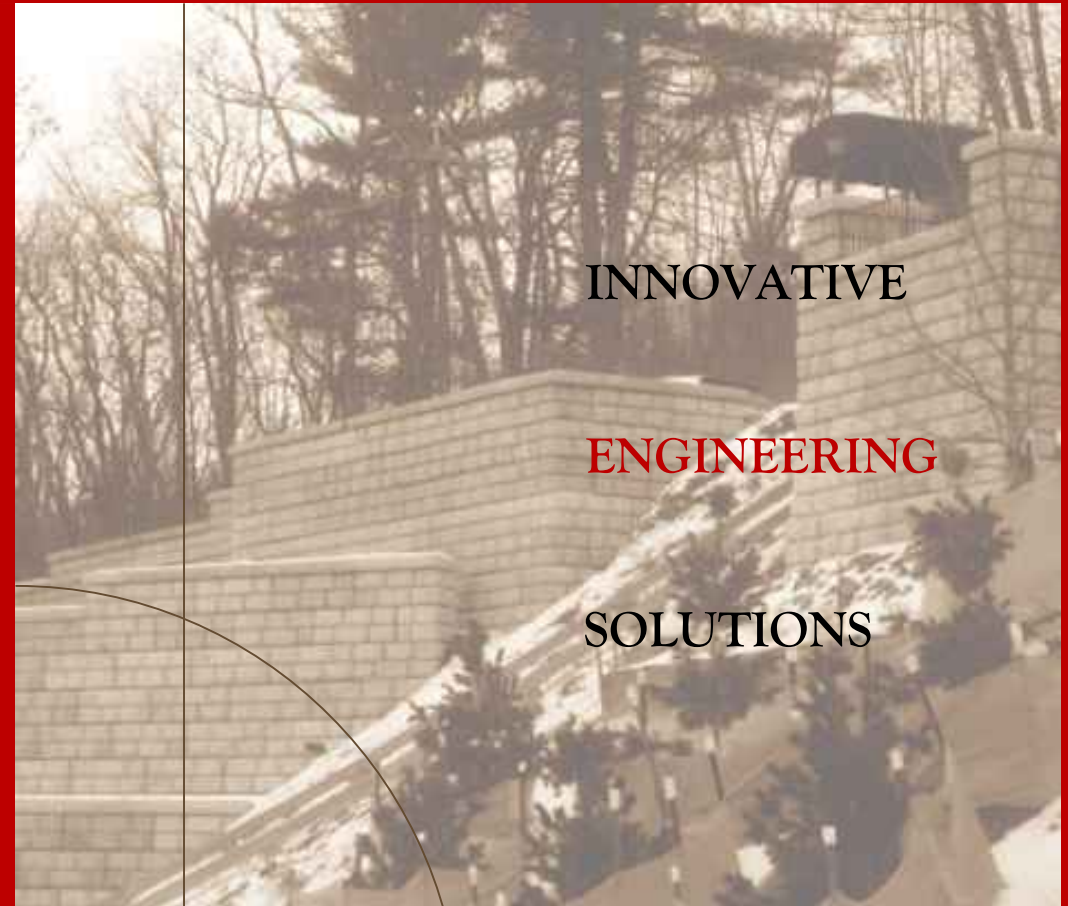


DESIGN SERVICES:

- Earth Retaining Structures
 - PMB (Precast Modular Block)
 - MSE (Mechanically Stabilized Earth)
 - SRW (Segmental Retaining Wall)
 - Reinforced Concrete
 - Slope Bags
 - Crib Walls
 - Reinforced Slopes
 - Gabions
 - Sheet Piles
 - T-Wall
 - H-Piles
 - Natural Stone
 - Boulders
 - Timbers
 - Geocells
- Reinforcement Methods
 - Geosynthetics
 - Steel Strips
 - Soil Nails
 - Earth / Rock Anchors
- Site Design
 - Grading / Hydrology
 - Utilities (Storm, Sanitary, etc.)
 - Alternative Stormwater Management (PICP Tanks, etc.)
 - Ponding (Permanent Pool, Infiltration)
 - Stormwater Pollution Prevention Plans
 - Wetland Mitigation
 - Pavements (Flexible, Rigid, Segmental)
- Foundation Improvement
 - Shallow Foundations
 - Deep Foundations
- Structural Design
 - Precast Concrete
 - Barriers & Free Standing Walls
 - Reinforced Concrete
 - Wood Structures

Alabama	Illinois	Minnesota	North Carolina	Texas
Arizona	Indiana	Mississippi	North Dakota	Utah
Arkansas	Iowa	Missouri	Ohio	Vermont
California	Kansas	Montana	Oklahoma	Virginia
Colorado	Kentucky	Nebraska	Oregon	Washington
Connecticut	Louisiana	Nevada	Pennsylvania	West Virginia
Delaware	Maine	New Hampshire	Rhode Island	Wisconsin
Florida	Maryland	New Jersey	South Carolina	Wyoming
Georgia	Massachusetts	New Mexico	South Dakota	
Idaho	Michigan	New York	Tennessee	

ADDITIONAL STATES AVAILABE UPON REQUEST



EDUCATIONAL SERVICES:

- Contractor Education in Techniques and Methods (Commercial and Residential)
- Manufacturer Sales Teams Education (Systems, Applications, etc.)
- Marketing Education (How to work with Engineers, Architects and Developers)
- Product/Submittal Reviews (Analysis and Recommendations)

PLANNING:

- Feasibility Report
- Concept Plans (Site Layout)
- Preliminary Plans (Earth Retention, Structural, etc.)
- Cost Analysis and Life Cycle Costing
- Quantity Estimates & Engineering Estimates (Construction Cost Estimate)

PROJECT MANAGEMENT:

- Project Approvals
- Product Approvals
- Project Permitting
- Project Representation
- Construction Observation/Inspection

LEGAL CONSULTING:

- Expert Witness
- Independent Third Party

SYSTEMS AVAILABLE:

- Allan Block
- Anchor
- Baskets
- Boulders
- Bronco
- Cast-In-Place
- Castle Wall
- Celtik
- CMU
- Cornerstone
- Deltalok
- Gabions
- Keystone
- Lock & Load
- London Boulder
- Magnum Stone
- Mesa
- Natural Stone
- Rockwood
- ReCon
- Redi-Rock
- Reinforced Slopes
- Stone Strong
- Versa-Lok

ADDITIONAL SYSTEMS AVAILABLE UPON REQUEST

WEBSITE: WWW.CDP-US.COM

CONTACTS:

- Mike Johnson, P.E. - mikej@cdp-us.com
- Curt Derichs, P.E. - curtd@cdp-us.com
- Tim Hatten - timh@cdp-us.com
- Scott Pearson - scottp@cdp-us.com
- Jonathan Van Zee - jonathanvz@cdp-us.com
- Jeff Calander - jeffc@cdp-us.com
- Steve Kennedy - stevek@cdp-us.com
- Stephanie Derichs - stephd@cdp-us.com
- Bryan Novak - bryann@cdp-us.com



7050 TERRITORY PASS LAKEVILLE, MN 55044
 PHONE: (952) 303-5312 • FAX: (763) 392-1989 • EMAIL: INFO@CDP-US.COM



INNOVATIVE ENGINEERING SOLUTIONS



Civil Design Professionals is a professional engineering firm that takes pride in our ability to help clients achieve the results they desire by providing complete site solutions. Whether it's a segmental retaining wall with a traffic barrier or a permeable pavement with an underground storm water detention system, CDP will successfully accomplish the task. Our primary objective is to build lasting relationships by providing our clients with the most cost effective solutions available in a timely manner.



PROJECT: Midtown Greenway Bike Path

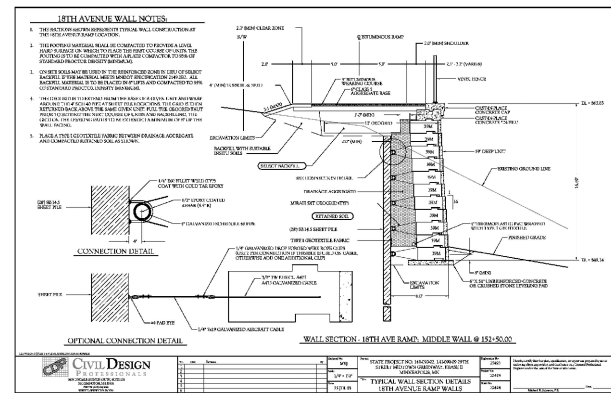
ISSUES: A potential global stability failure and close proximity of buildings limited excavation, negating the use of a traditional geogrid reinforced structures for the new bike path in central Minneapolis.

SOLUTION: A sheet piling system along with a unique galvanized aircraft cable to connect a ReCon facing unit, providing a significant cost savings on the project over more traditional reinforced cast-in-place walls.



"The Engineers extensive experience with retaining wall design and their ability to devise state of the art solutions had a major impact on the success of this project."

Stan Hamilton - CEO
ReCon Wall Systems

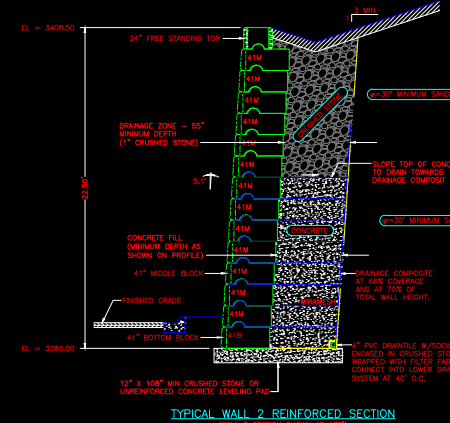


PROJECT: Rapid City Regional Hospital

ISSUES: The existing sandstone hill required blasting to remove material. The project geotechnical engineer recommended using a very low shear strength for the retained sandstone. In addition, the local Redi-Rock manufacturer producer had an excess supply of 41" blocks and preferred to use them.



SOLUTION: We devised a gravity structure by pouring a 96" composite unit in the field, using 41" units and the rock excavation to contain the concrete pour. A drainage composite was placed up the rock excavation to eliminate and discharge any hydrostatic pressure that could develop at the back of the cast-in-place concrete.

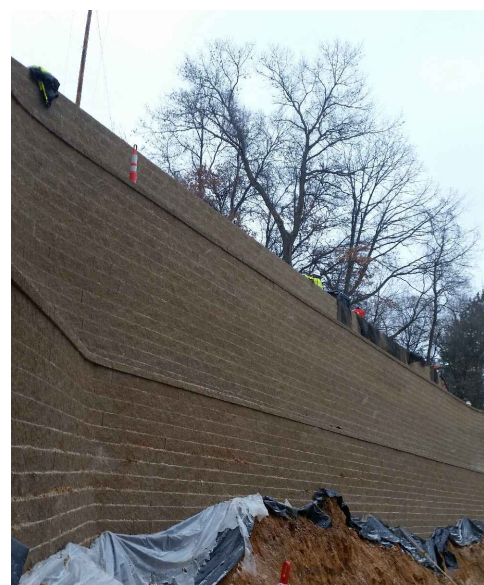


CREATING A HISTORY OF EXCELLENCE

Quality, Service and Integrity are the trademark of CDP. Client satisfaction and cost effective designs are our top priorities.

ON A FOUNDATION OF EXPERIENCE

Civil Design Professionals is headquartered in Minneapolis, Minnesota. We provide professional design and consulting services to block manufacturers, retaining wall companies, municipalities, engineering firms, State Transportation Departments, developers and contractors for both commercial and residential projects.



Civil Design Professionals personnel have designed in excess of 50 million square feet for the retaining wall industry. We have the reputation of being on the forefront of cutting edge designs as our industry develops. Our vast experience enables us to optimize designs, creating the greatest cost savings and profit margins for our clients.

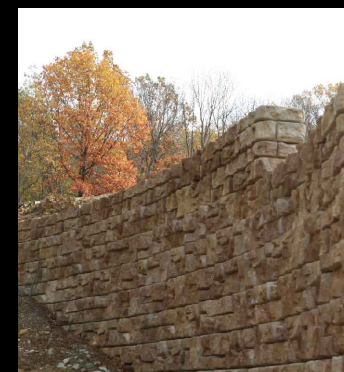
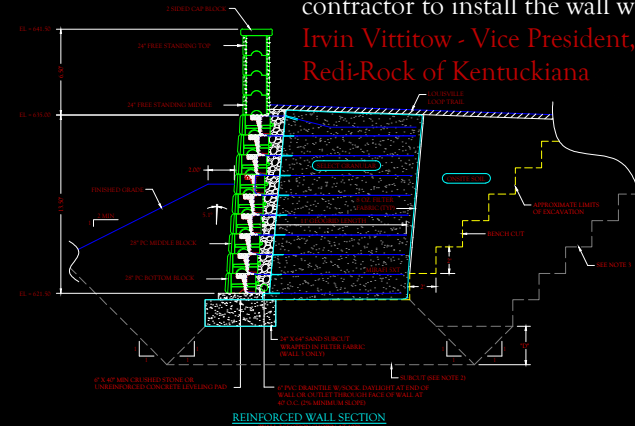
PROJECT: Park System Trail Project

ISSUES: Tall wall heights, a 2H:1V toe slope and fine grain site materials created global stability issues for this southern trail project.

SOLUTION: Design and installation of the first Redi-Rock Positive Connection (PC) Block. The design utilized gravity and reinforced sections to provide the most cost effective solution. The positive connection met the specification requirements and the aesthetics met the owners desire to match the natural setting.

"We had the opportunity to work with Civil Design Professionals for the first Positive Connection wall installed with Redi-Rock. The project required a unique design that featured reinforced, gravity, and free standing walls that has to meet Department of Transportation standards. The plans for the project were spot on and enabled the contractor to install the wall with ease."

Irvin Vittitow - Vice President,
Redi-Rock of Kentuckiana



PROJECT: Elan Uptown

ISSUES: Complex site geometry, coordination of multiple tiered walls with existing bridge pier, construction time constraints and numerous site changes during the design process.

SOLUTION: This was part of a larger project that improved about three city blocks along the Midtown Greenway Bike Trail. In addition to aesthetics, the terraced ReCon wall system allowed residents to have access to the bike trail from the courtyard between the buildings. CDP was able to accommodate the limited site area with multiple zero - degree batter walls. The geometry and layout of the walls was incorporated with a complex staircase system and pedestrian bridge to create a vast improvement on the former abandoned railroad corridor.

